

# PLACES TO VISIT

## GROUPS TO JOIN

### •Whizz- Kidz – Swindon

Whizz-Kidz Clubs are free **youth clubs** for young wheelchair users regardless of ability aged between 8 and 24 years

Contact: 07867 124901

Website: <https://www.whizz-kidz.org.uk/>



### •Swindon Wheels for All Inclusive cycling centre @ Swindon Town Football Club

Email: [rebeccacox@britishcycling.org.uk](mailto:rebeccacox@britishcycling.org.uk)

£3 per session



### •Swindon Town FC

(for 16+ with learning difficulties)

Email: Andrea Clayton- [contact@stfcfoundation.com](mailto:contact@stfcfoundation.com)

### •Swindon Town FC Pan Disability

Wednesday 6-7pm @ Swindon Town £3 per session

Email: Andrea Clayton [contact@stfcfoundation.com](mailto:contact@stfcfoundation.com)



•**DS Active Football** @ Swindon Town FC  
(for children and young people with Down's Syndrome aged 5-25 years)

Wednesdays 5pm – 6pm. £3 per session

Book here: <https://stfcfoundation.ezfacility.com/OnlineRegistration>

Email: Andrea Clayton - [contact@stfcfoundation.com](mailto:contact@stfcfoundation.com)



# PLACES TO VISIT

## GROUPS TO JOIN



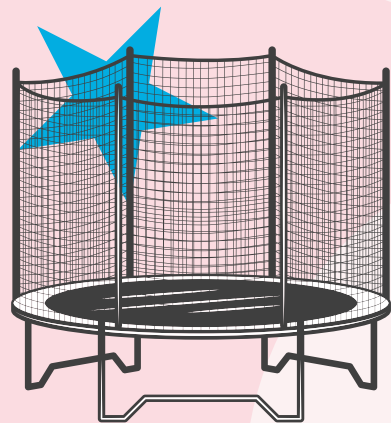
### •Ability Counts Football

Wiltshire County FA support FA affiliated football teams to deliver accessible football opportunities for youth and adult players

Contact: 01793 486047

Email: [lyndon.taylor@wiltshirefa.com](mailto:lyndon.taylor@wiltshirefa.com)

Website: <https://wiltshirefa.com>



### Freedog SEND Sessions

Sunday 16:45-18:00

This is a closed session for SEND individuals and their families to come and enjoy a Freedog open bounce session with those alike, an amended environment, and friendly staff (all ages) The session costs £10 per person and everyone bouncing will need to wear the Freedog non-slip socks which can be purchased at reception for £2 each. 1 carer/responsible adult can bounce free of charge per 1 SEND individual, but will still need to purchase Freedog socks

Contact: 01793 251555

Email: [info@freedog.com](mailto:info@freedog.com)

Website: <https://freedogswindon.com/session/send-sessions/>

### Park Run and Junior Park Run

These are free: 'Whether you want to run, jog, walk, volunteer, or spectate, parkrun is accessible to all...'

There are 2 courses in Swindon. Saturday park runs are 5km and Sunday park runs are 2km, for children aged 4-14.

<https://www.parkrun.org.uk/lydiard/course/>

<https://www.parkrun.org.uk/sevenfields/course/>



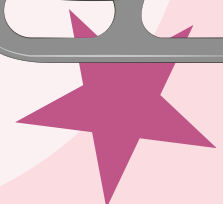
### Inclusive dance classes @ Swindon Dance

Email : [jade.saltocoordinator@outlook.com](mailto:jade.saltocoordinator@outlook.com)

Inclusive sport at The Link Centre, Swindon

SEND Ice Skating:

School Holidays on Tuesdays 12.00-12.45 £4.50 - includes one free carer's entry (pre-book) <https://bookings.better.org.uk/location/the-link-centre/send-ice-skating/2025-03-19/by-time>

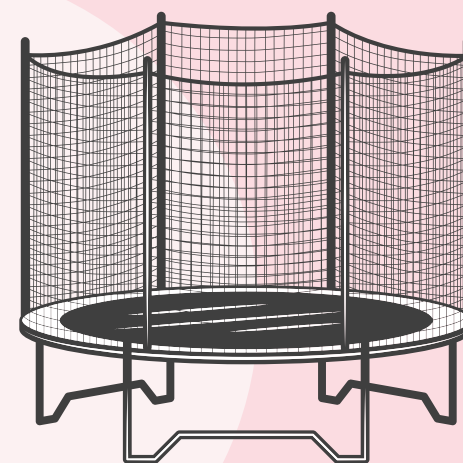


# PLACES TO VISIT

## GROUPS TO JOIN

### ★ **SEND Trampolining:**

School holidays: Tuesday 9.30-10.30am ; Thursdays 9.30-10.30am £4.50 - each ticket allows one free carer's entry.  
Pre-book: <https://bookings.better.org.uk/location/the-link-centre/trampoline-park/2025-03-19/by-time>



Every Tuesday 2-3pm £3.40 Entry free for one carer. Hoist available.  
Pre-book : <https://bookings.better.org.uk/location/the-link-centre/swimming>

### **Inclusive swim age 16+**

### **Supported Swimming Lessons for Children with Disabilities**

'We provide our Swimming Teachers with specialist disability training, which enables them to deliver your lessons. These lessons can be 1:1, small group or with a Specialist Teacher in a mainstream group. We provide funding so that together, we can offer you supported lessons to suit your child for the same price as a standard group lesson.'

[www.levelwater.org/learn-to-swim](http://www.levelwater.org/learn-to-swim)

### • **Coate Water**

[https://www.swindon.gov.uk/info/20077/parks\\_and\\_open\\_spaces/487/coate\\_water\\_park](https://www.swindon.gov.uk/info/20077/parks_and_open_spaces/487/coate_water_park)

**With free splash park** (11am - 6pm every day end of May - end of September)

• **Lydiard Park** <https://www.lydiardpark.org.uk/visit/park-facilities/childrens-playground/> (With sensory areas)



<https://www.museumartswindon.com/whats-on/> Contact: 01793 466556 Civic Offices, Euclid St, Swindon SN1 2JH • **Steam Museum**  
<https://www.steam-museum.org.uk/> Free admission to essential carers accompanying a paying disabled visitor. Please choose the carer option when you pre-book your visit online so we know you are bringing a companion. One carer will be admitted free of charge.